

# Depot Container

For the central collection of waste and recyclables

[ssi-plastic.com](http://ssi-plastic.com)



**SSI SCHÄFER**

# Depot Container SSI SCHAEFER Plastics

For the central collection of scrap glass, waste paper, light packaging materials, textiles, residual waste and electronic scrap.

## Benefits

- 20 SSI SCHAEFER Plastics depot containers can be emptied within 1 hour compared to 12 standard depot containers which means 66% more efficiency
- Basic modular system, which can always be quickly converted from one version to another
- All the depot containers can be divided into two or three separate chambers by means of dividing walls, so that up to three different types of recyclable material can be simultaneously collected in one container
- Extremely cost-effective, quick and easy discharging with one man operation
- Exceptionally strong and long-lasting container
- Single-chamber paper container with large aperture
- "Made in SSI SCHAEFER Plastics" quality - made of steel, fully galvanised with optional additional paint finish
- Colour coded corners and information stickers to identify the recyclable material
- Automatically closing flaps in the apertures protect against fire and water ingress
- Easy conversion, e. g. from a glass to a paper container or from a single-chamber to a multi-chamber container
- Additional sound reduction through the optimal low reach of the crane when the container is discharged
- Special versions for oversize and bulky packaging waste



Depot container with glass aperture

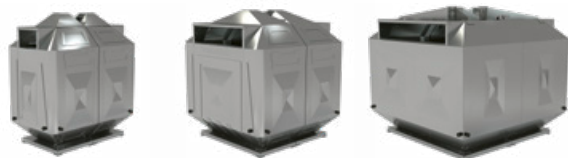


## Standard version

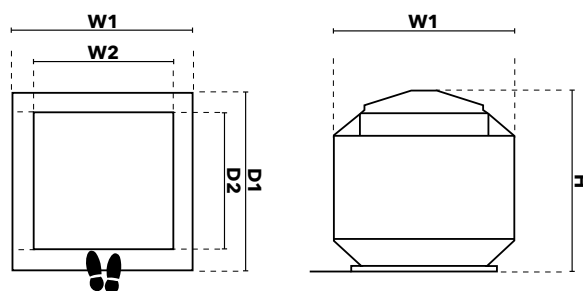
- Single-chamber container
- Container sizes: 1.6 m<sup>3</sup>, 3.2 m<sup>3</sup> and 5.0 m<sup>3</sup>
- Container made of galvanised sheet steel
- Apertures for paper and glass

## Extras

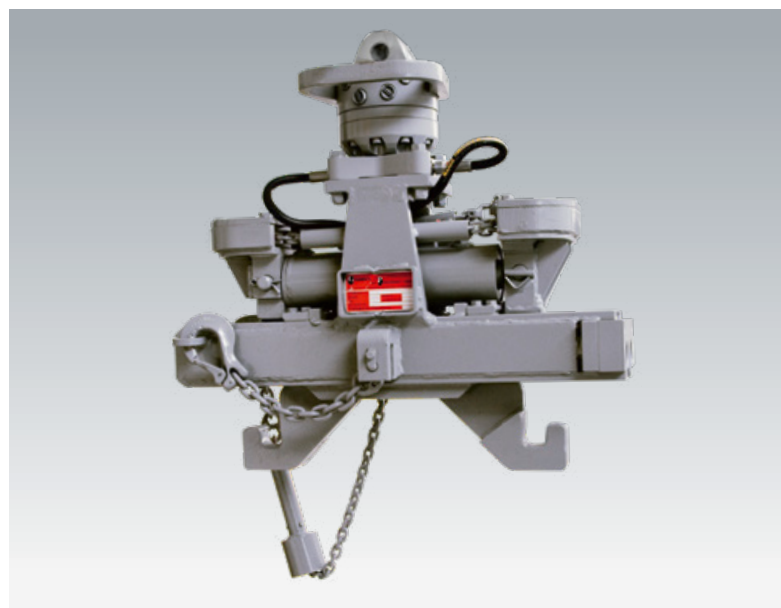
- Partitions for 2 and 3 chamber systems
- Noise reduction
- Special aperture for textiles and electronic scrap
- Large aperture for light packaging and residual waste
- Painting



Depot container	1.6 m <sup>3</sup>	3.2 m <sup>3</sup>	5.0 m <sup>3</sup>
Width mm (W1 / W2)	900 / 730	1,500 / 1,200	1,850 / 1,575
Depth mm (D1 / D2)	1,500 / 1,225	1,500 / 1,200	1,850 / 1,575
Height mm (H)	1.675	1.675	1.675
Paper aperture	340 x 110	940 x 110	1,300 x 110
Nominal capacity m <sup>3</sup>	.6	3.2	5.0



All dimensions are approximate following the DIN 13071.



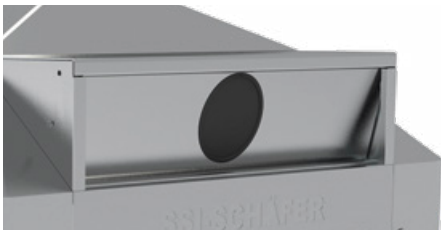
SSI SCHAEFER Plastics standard opening device

Combination opening device for operation with SSI SCHAEFER Plastics system and "Two Hook" system containers

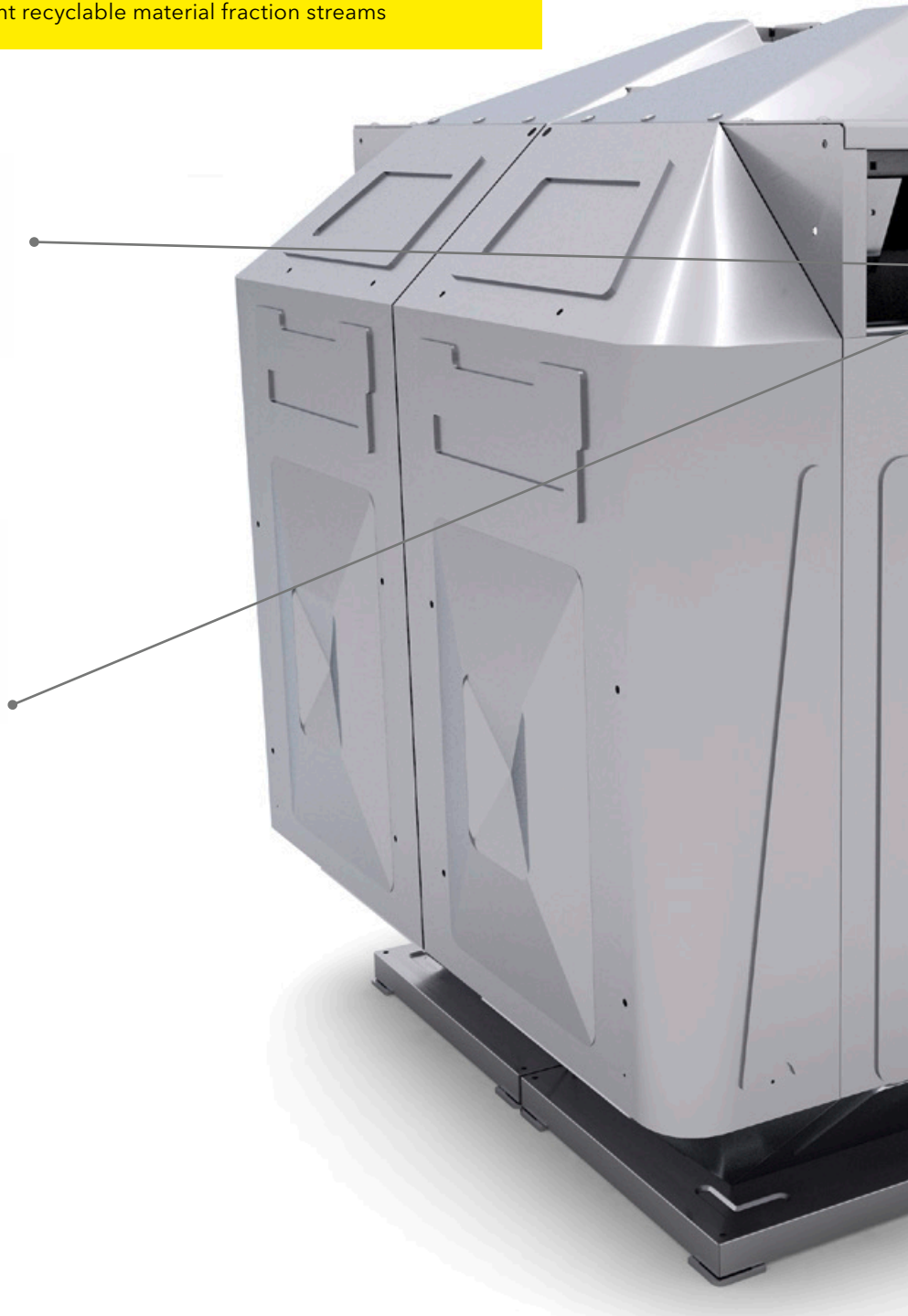
- Easy, quick conversion
- Other apertures or chamber walls can be easily modified for a very small cost
- Depot container can be used for different recyclable material fraction streams



**Aperture** for Paper

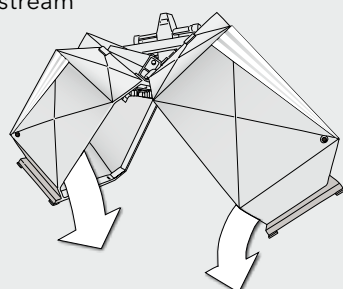


**Aperture** for Glass



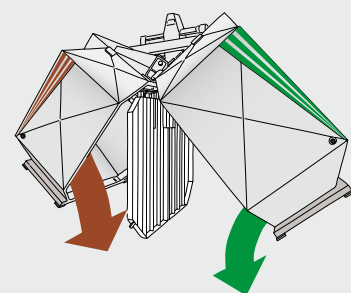
### Single-chamber system

- Collection of one waste stream
- Recommended for sites with high waste accumulation of one waste stream



### Multi-chamber system

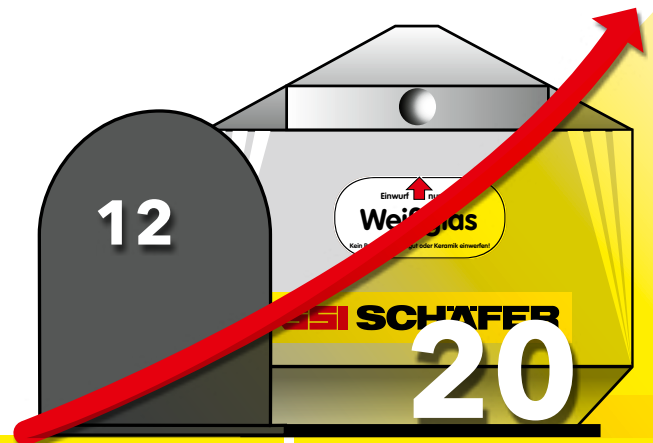
- Collection and separation of different materials
- Container can be divided in two or three chambers by means of chamber walls
- Easy retrofitting of chamber walls



# Depot Container - Flexible



Aperture for textiles & electronic scrap



## Advantages, which prove themselves **immediately!**

**66 % productivity increase** with use of the Depot Container System SSI SCHAEFER Plastics compared to other depot containers!

According to an independent assessment in Switzerland this means that:

**66 % Leistungszuwachs** = **20 Depot containers from SSI SCHAEFER Plastics can be emptied** compared to  
= **12 Depot containers of systems from other producers** (per hour without travelling and non-productive time)

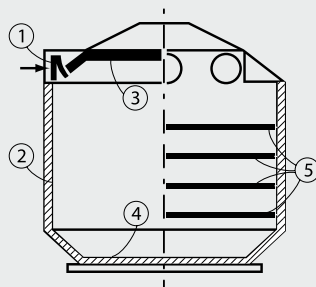
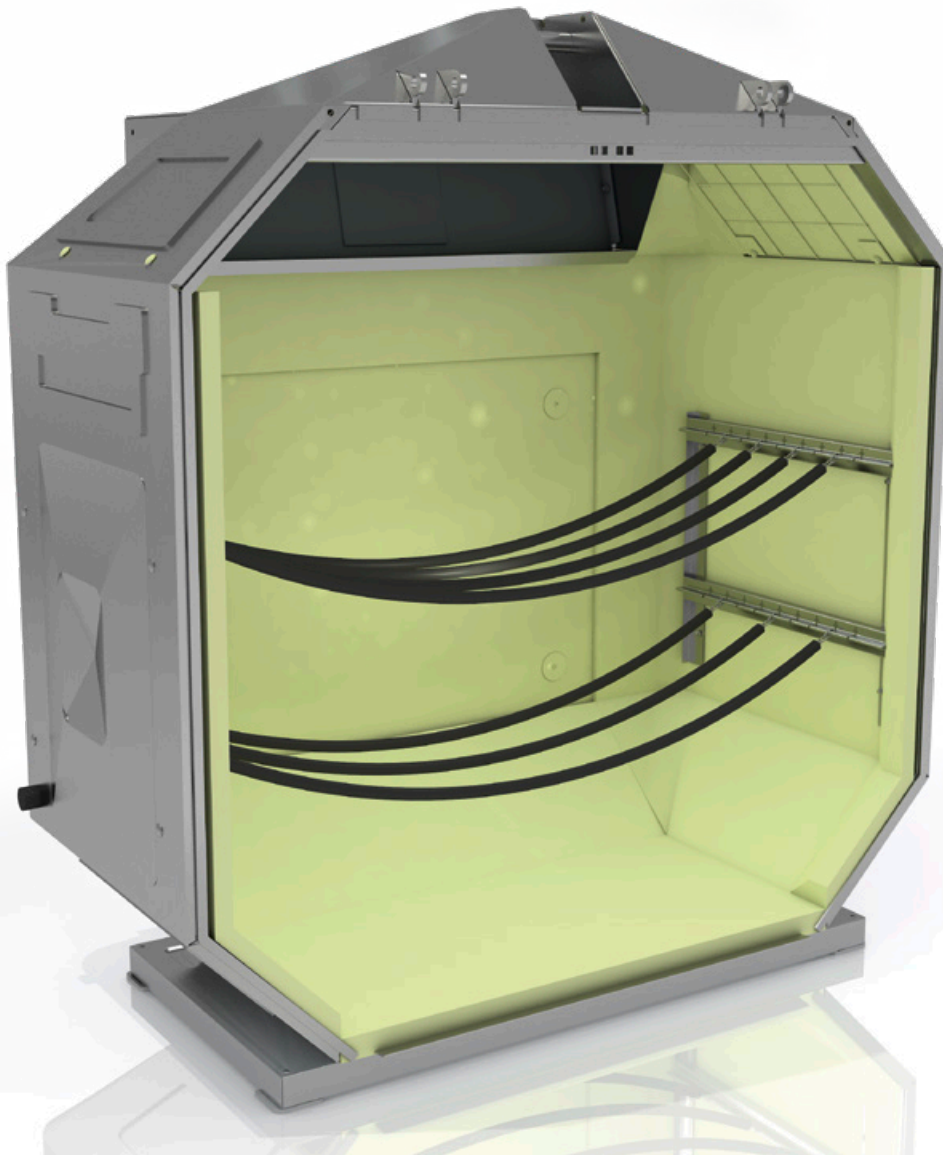
**The productivity of 5 collection vehicles using conventional systems can be achieved with 4 vehicles with SSI SCHAEFER Plastics system**

Effective and safe service is carried out with one operator.

## The conclusion is

- Faster
- Safer
- Easier
- More cost-effective

# Noise Reduction - We are Better than the Standard!

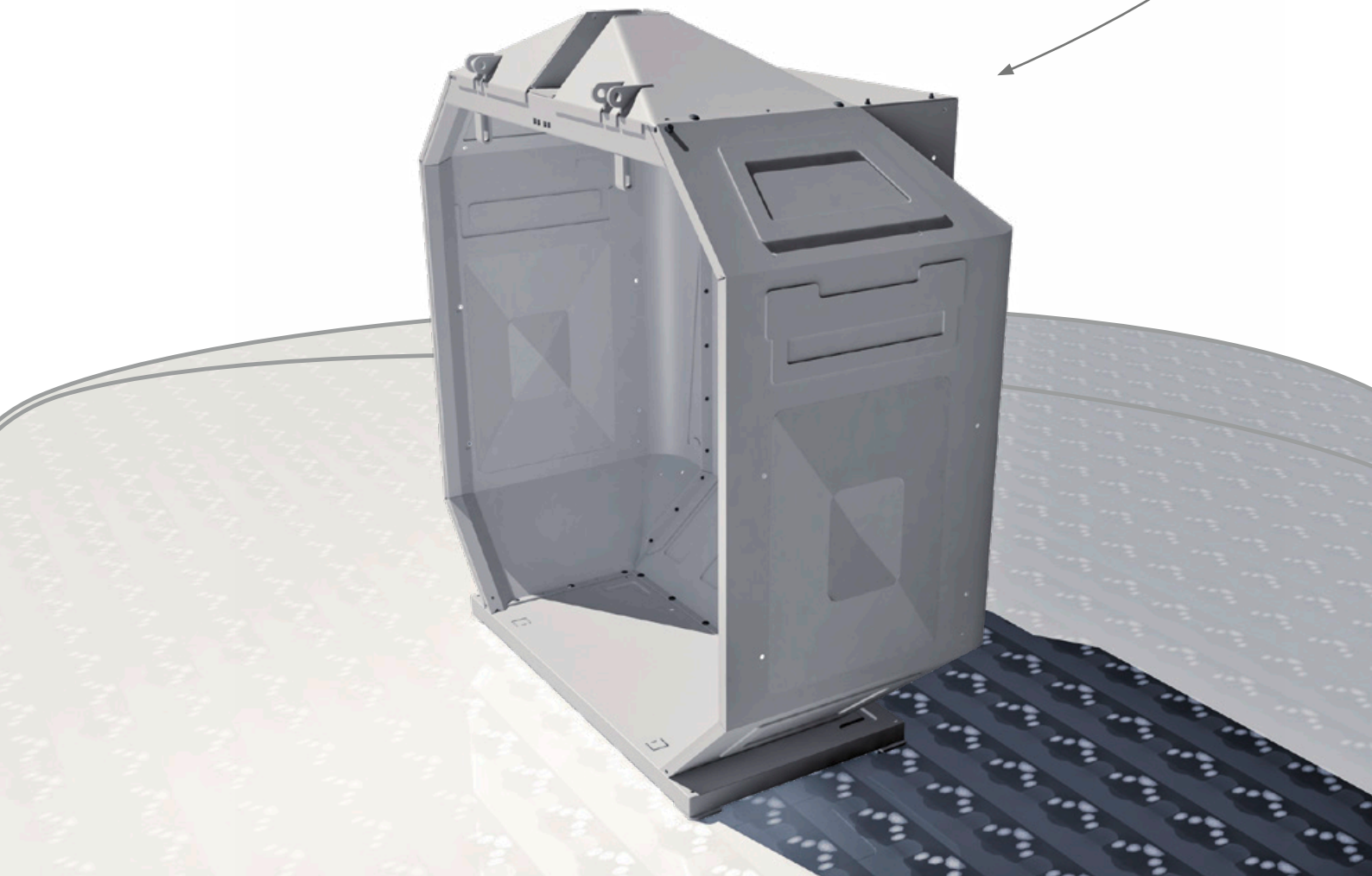
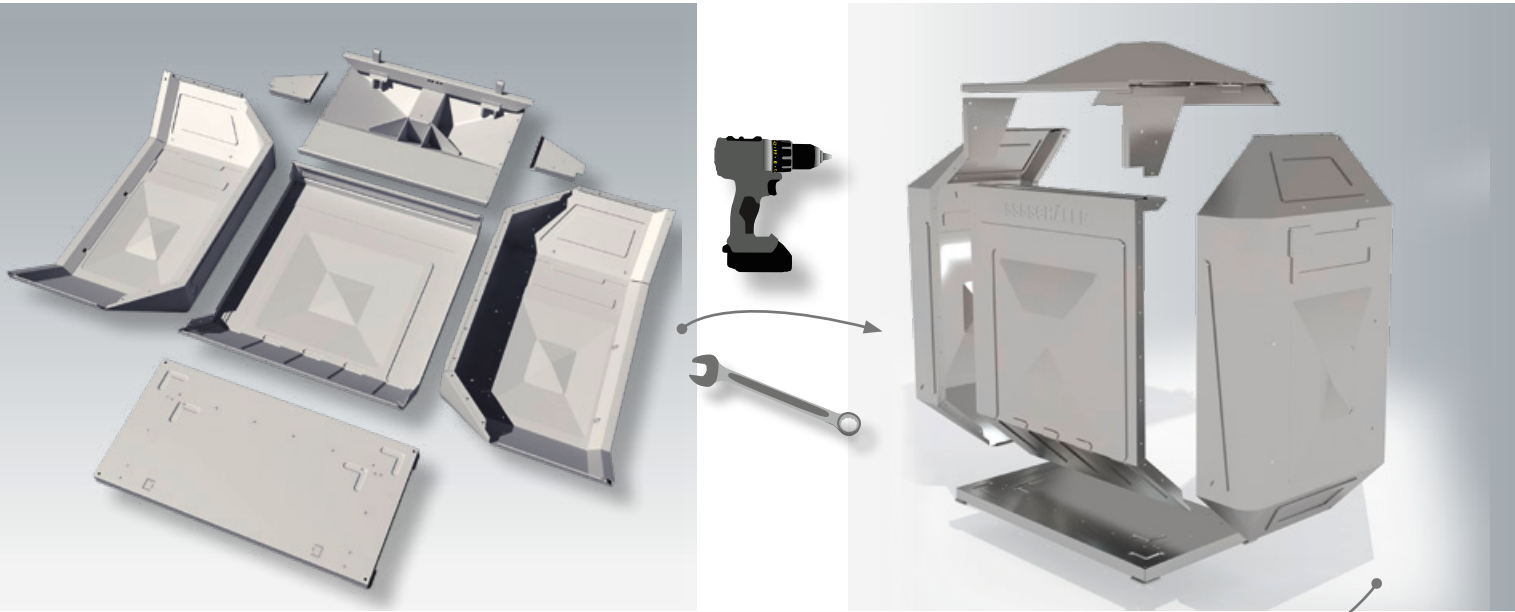


1. Elastic aperture flaps in rubber
2. Foam covering of the walls
3. Insulating mat at the top
4. Insulating material at the bottom
5. Plastic covered "breakfalls"

- Polyurethane foam covered walls, insulating mats inside the top of the containers and fitting the containers with elastic aperture flaps as well as plastic coated "breakfall" chains
- The test report of the sound technology department of the BeSB GmbH Berlin confirms that the emission values for the insertion of glass bottles are even lower than the noise limits stipulated for Class 1 by the Federal Department of the Environment. The Department of the Environment grades this system as "lacking noise"
- The effective action of the crane loading mechanism on the collection vehicle guarantees additional noise reduction during the discharging operation
- This system achieves a maximum low level reach of the container, and this results in a quiet discharge of the container close to the floor of the vehicle
- Ideally suited to a 2 shift operation
- Short pay back period for cost of the system

# Depot Container 3,2 m<sup>3</sup> - unmounted / bolttable

- Reduction of transport volume by up to 70%, thereby high potential savings
- Easy and fast on site assembly
- Damaged parts can be replaced separately
- All special equipment is compatible with the existing SSI SCHAEFER Plastics Depot Container System



# Six Reasons for SSI SCHAEFER Plastics

- **Dependability**

Financially independent family business.

- **Economic efficiency**

Durable and globally proven container solutions contribute towards our customers' success.

- **Quality**

Targeted quality management in accordance with recognized standards ensures great reliability and resilience of our products.

- **Reliability**

We ensure customer satisfaction throughout our the product life cycle through our own Customer Service & Support.

- **Know-how**

For more than 50 years, we have built up our expertise of containers, customers, industries and markets. Our customers benefit from our years of experience when it comes to solving individual challenges.

- **International Presence**

We're a leading supplier of innovative container systems, structural packaging, and waste technology and recycling solutions with worldwide operations and more than 1,000 employees.

[ssi-plastic.com](https://ssi-plastic.com)

2023/06/EN © SSI SCHÄFER Plastics  
We assume no liability for printing errors.



**SSI SCHÄFER**